

## CAGES AND HUTCHES

### J-Series Multi-stacking Hutches

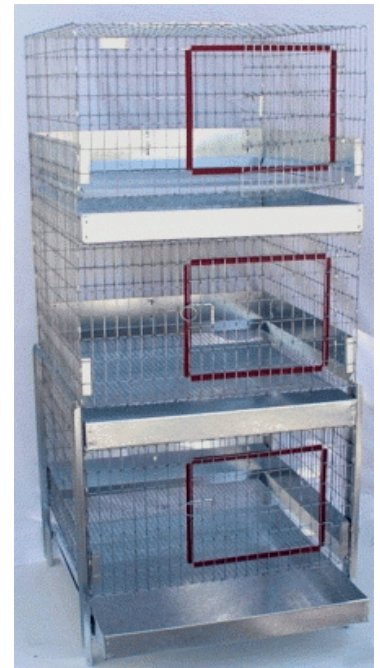
Make efficient use of space with these stacking units! All **sidewalls** and **tops** are constructed of 2" X 1", 14-gauge galvanized before wire. **Dividers** are made from 16-gauge wire mesh. Cages with 14" compartment height have ½" x ½" galvanized-after floors. Cages with 18" compartment height have 1" x ½" 14-gauge galvanized-before floors. All units include 2½" high plastic Dura-Trays, and a set of steel **support legs**. The trays for the upper tier rest on the top panel of the cage compartment underneath.

These stacking units **cannot be shipped** pre-assembled, so orders for shipment will be sent unassembled. Although a supply of J-clips are included, a J-clip pliers will be required for assembly, and a ringer will be required for installing any dividers substituted to solid poly divider panels.

Not all cage sizes are held in stock, so allow time for cage construction after you place your order. Blue polyethylene solid dividers are available upon request.

**Ordering instructions:** To order, locate the Base Stock Number in the table below of the desired cage. Complete the Stock Number by adding the variety code (F, G, S, or T) after the Base Stock Number. For example, an HJ5G cage would be a 30" X 36" cage with 3 compartments per tier, unassembled, and with urine guards. Note any additional variations from the base models on the order. J-series cages can be modified to accommodate a wide variety of uses. For J-Clip pliers rental, see Pg. 21.

Tiers are defined as vertical levels, similar to stories of a building. Compartments are living quarters within the length of that level (tier).



HJ1T

Cage Size (in)			No. Tiers	Compart. per Tier	Floors & Dividers	Total Height (in)	Base Stock No.	Price Each			
D	L	H						Unassembled		Assembled	
								Code F No Urine Guards	Code G With Urine Guards	Code S No Urine Guards	Code T With Urine Guards
24	24	14	3	1	½" X ½" G.A.	57	HJ1	\$155.50	\$178.20	\$168.80	\$194.90
			4	1	½" X ½" G. A.	75	HJ2	\$195.30	\$225.40	\$215.10	\$250.10
	36	14	3	2	½" X ½" G. A.	57	HJ3	\$223.40	\$250.60	\$244.80	\$277.50
			4	2	½" X ½" G. A.	75	HJ4	\$285.50	\$321.70	\$310.40	\$353.50
30	36	14	3	3	½" X ½" G. A.	57	HJ5	\$267.90	\$297.30	\$302.40	\$338.10
			4	3	½" X ½" G. A.	75	HJ6	\$346.90	\$385.90	\$393.70	\$440.60
24	24	18	3	1	1" X ½" G. B.	69	HJ7	\$160.20	\$182.90	\$172.50	\$200.70
			3	1	1" X ½" G. B.	69	HJ8	\$176.60	\$199.90	\$188.20	\$216.90
	36	18	1	1	1" X ½" G. B.	69	HJ9	\$204.40	\$230.40	\$215.90	\$247.40
			2	1	1" X ½" G. B.	69	HJA	\$230.20	\$257.50	\$250.20	\$282.90
30	24	18	3	1	1" X ½" G. B.	69	HJB	\$177.10	\$200.90	\$188.70	\$217.90
			3	1	1" X ½" G. B.	69	HJC	\$209.90	\$234.50	\$220.90	\$250.90
	36	18	1	1	1" X ½" G. B.	69	HJD	\$228.60	\$255.80	\$240.70	\$273.30
			2	1	1" X ½" G. B.	69	HJE	\$255.50	\$283.90	\$274.50	\$308.50

**Cages Now Include Plastic Dura-Trays As Standard!**

We offer a 5% discount on cages for any order including \$400.00 or more of any cages.

## K-Series Multi-Stacking Hutches

Rectangular Stacking Cages With Metal Support Legs at Each Level

### Cage Specifications and Ordering Instructions:

1. The K-series cages are manufactured by our own company. This series offers a wide variety of options, which allows you to purchase cages that fit your needs.
2. Units can be stacked one, two, or three high with the heavy, galvanized steel cage legs that are included with each cage.
3. Cages are ideal for a variety of animals, including rabbits, dogs, puppies, ferrets, etc. For rabbits, we do not recommend the vinyl wire option.
4. Units include the high-quality plastic Dura-Trays. Super easy to clean, and they will never rust!
5. Doors are framed and swing out to the right. The front of the cage is designed with superior door locks compared to those on our competitors' models, and the door opening is slightly offset, leaving room for a feeder. **Feeders sold separately.**
6. 4" high urine guards are a standard option for galvanized wire cages (Code R). A ringer is required for installation. They are available for vinyl coated wire cages upon request. These galvanized metal panels can be fitted to the inside of the cage, which helps to prevent urinating past the tray.
7. Blue, solid poly dividers and different mesh floor panels are available upon request. Wire dividers are standard for multi-compartment cages.
8. Cage sides and top are made of 2" X 1", 14-gauge galvanized after wire for galvanized wire cages, and 2" X 1", 14-gauge sides and top for black vinyl wire cages.
9. Floors for **galvanized wire** cages are either 1/2" X 1/2", 16-gauge galvanized after wire for 14" high cages, or 1" X 1/2", 14-gauge galvanized after wire for 18" high cages. See pricing table below for floor options in black vinyl wire cages.
10. **Some Assembly Required.** Cages are priced collapsed, pre-cut, and with the front complete. Galvanized wire cages include plated steel J clips for assembly. Black vinyl coated wire cages include stainless steel J clips. J-clip pliers WILL BE required to complete the assembly of **all cages**. A ringer WILL BE required to attach cage rings and to complete assembly for all cages with 1" X 1", 12 1/2 -gauge vinyl floors (Code W) and for all cages with a poly dividers substitution. See tool rental information below, or Page 12 of our catalog to purchase a new ringer or pliers.



Picture is (3) HK1R units

Unassembled cages require the use of a **J-clip pliers**. A **ringer** is required for urine guard installation. We provide J-clip pliers on a rental basis for a deposit of \$13.90. If returned within 30 days, \$10.90 of the deposit will be refunded. Ask for **Stock No. Z079**.

11. **To Order:** Please insert the Code Letter for the K-series cage you wish to buy after the Base Stock No. For example, HK8R would be 24" X 36" X 18" cage made with galvanized after welded wire and complete with urine guards and tray.

**We offer a 5% discount on cages for any order including \$400.00 or more of any cages!**

Dimensions			Compartments	Base Stock No.	GALVANIZED Wire Price Each		BLACK VINYL Wire Price Each		Shipping Wt (lbs) 2 pkgs/cage
D	L	H			CODE Q No Urine Guards	CODE R With Urine Guards	CODE V 1" X 1/2", 14-ga. Floors	CODE W 1" X 1", 12 1/2 - ga Floors	
18"	24"	14"	1	HK1	\$61.70	\$68.30	--	--	11 & 7
24"	24"	14"	1	HK3	\$68.40	\$75.90	--	--	12 & 8
	36"	14"	2	HK4	\$96.60	\$105.70	--	--	*17 & 8
30"	36"	14"	3	HK5	\$117.50	\$127.20	--	--	*21 & 8
24"	24"	18"	1	HK6	\$73.50	\$81.10	\$86.70	\$84.10	14 & 9
	30"	18"	1	HK7	\$79.90	\$87.80	\$94.60	\$91.70	*17 & 9
	36"	18"	1	HK8	\$89.40	\$97.90	\$106.40	\$102.90	*18 & 10
			2	HK9	\$99.90	\$109.10	\$119.40	\$119.80	*21 & 10
30"	24"	18"	1	HKD	\$80.90	\$88.20	\$95.90	\$93.60	*17 & 9
	30"	18"	1	HKL	\$91.40	\$99.50	\$106.60	\$104.20	*19 & 10
	36"	18"	1	HKM	\$98.70	\$107.70	\$117.80	\$114.90	*24 & 10
			2	HKN	\$109.60	\$119.10	\$132.20	\$133.20	*25 & 10
36"	24"	1	HKO	\$107.90	\$117.10	\$127.90	\$125.10	*29 & 14	

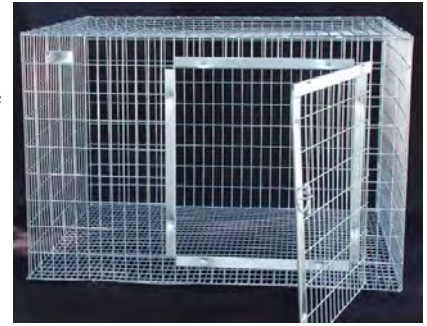
\*UPS Dimensional weight regulations apply. Additional shipping charges may occur.

## H-Series All-metal Hutches

Rectangular, Hanging Cages Without Pans for Rabbit, Dog, and Other Small Animals

### Cage Specifications and Ordering Instructions:

- Doors swing out and to the right.
- Some Assembly Required.** Cages are priced collapsed, pre-cut, and with the front complete. J-clips and hardware are included for assembly. Set-up charge on request varies with each cage size. Please call for details.
- All dividers are 1/2" x 1" or 1/2" x 1/2" mesh. Doors and door openings are framed with galvanized metal "U" channels, for smoothness and rigidity. **Feeders sold separately (See Page 24).**
- To Order:** Please insert the Code Letter for the H-series cage you wish to buy after the Base Stock No. For example, H79B would be 24" X 24" X 18" cage made with galvanized before wire and with a 14 gauge floor.



H80A

### Please Note:

- Cages should be ordered prior to date needed.
- Baby saver wire is a special side wire with the bottom 4" a smaller mesh.
- Cages listed as United Parcel Service (U.P.S.) shipments and total over 250 lbs may be shipped by truck. No package for United Parcel can be over 130" in length plus girth.
- Custom cages** can be made for all animals - call to get a quote.

**QUESTIONS ABOUT GALVANIZED AFTER VS. GALVANIZED BEFORE MESH?**

See Page 1

**Galvanized After Welded Cages (Codes A & M) Provide Metal Door Framing on the Door and Door Opening**  
**Galvanized Before Welded Cages (Codes B & L) Provide Plastic Door Liners on the Door Openings**

Dimensions			Floor Construction	Compartment	Base Stock No.	Price Each (common options - others available on request)				Ship. Wt. (lbs)	Shipping Courier
D	L	H				Galvanized Before Wire		Galvanized After Wire			
						CODE B 2" X 1" sides	CODE L Baby-saver sides	CODE A 2" X 1" sides	CODE M Baby-saver sides		
18"	24"	14"	16 ga. 1/2" X 1/2"	1	H74	\$23.20	\$27.40	\$26.90	\$29.70	8	U.P.S.
24"	18"	14"	16 ga. 1/2" X 1/2"	1	H75	\$23.10	\$27.30	\$27.30	\$30.10	8	U.P.S.
	24"	14"	16 ga. 1/2" X 1/2"	1	H76	\$25.60	\$30.30	\$30.10	\$33.20	10	U.P.S.
	36"	14"	16 ga. 1/2" X 1/2"	2	H77	\$43.60	\$49.80	\$51.70	\$55.90	15	U.P.S.
30"	36"	14"	16 ga. 1/2" X 1/2"	3	H78	\$58.30	\$65.50	\$68.30	\$73.30	15	U.P.S.
24"	24"	18"	14 ga. 1/2" X 1"	1	H79	\$27.50	\$32.60	\$33.40	\$36.50	10	U.P.S.
	30"	18"	14 ga. 1/2" X 1"	1	H80	\$31.90	\$37.60	\$38.50	\$41.90	10	U.P.S.
	36"	18"	14 ga. 1/2" X 1"	1	H81	\$35.70	\$41.90	\$42.90	\$46.60	13	U.P.S.
			14 ga. 1/2" X 1"	2	H82	\$44.20	\$50.40	\$53.30	\$57.50	15	U.P.S.
	48"	18"	14 ga. 1/2" X 1"	1	H83	\$42.90	\$50.20	\$51.50	\$55.80	16	U.P.S.
			14 ga. 1/2" X 1"	2	H84	\$52.30	\$59.90	\$62.90	\$67.80	19	U.P.S.
	60"	18"	14 ga. 1/2" X 1"	2	H85	\$60.10	\$68.90	\$72.30	\$77.70	20*	U.P.S.
	72"	18"	14 ga. 1/2" X 1"	2	H86	\$67.70	\$77.70	\$80.90	\$87.10	24	Truck
	96"	18"	14 ga. 1/2" X 1"	4	H87	\$98.40	\$111.60	\$118.70	\$127.10	28	Truck
30"	24"	18"	14 ga. 1/2" X 1"	1	H88	\$32.30	\$37.90	\$38.70	\$42.10	10	U.P.S.
	30"	18"	14 ga. 1/2" X 1"	1	H89	\$35.70	\$41.90	\$42.90	\$46.60	13*	U.P.S.
	36"	18"	14 ga. 1/2" X 1"	1	H90	\$39.80	\$46.50	\$47.70	\$51.70	15*	U.P.S.
			14 ga. 1/2" X 1"	2	H91	\$49.40	\$56.60	\$58.60	\$63.10	16*	U.P.S.
	48"	18"	14 ga. 1/2" X 1"	1	H92	\$48.50	\$56.40	\$57.90	\$62.60	21*	U.P.S.
			14 ga. 1/2" X 1"	2	H93	\$59.50	\$67.90	\$70.90	\$76.20	23*	U.P.S.
	60"	18"	14 ga. 1/2" X 1"	2	H94	\$68.60	\$77.90	\$80.50	\$86.30	25	Truck
	72"	18"	14 ga. 1/2" X 1"	2	H95	\$75.60	\$86.10	\$88.40	\$94.70	27	Truck
			14 ga. 1/2" X 1"	3	H96	\$84.60	\$95.60	\$99.60	\$106.50	28	Truck
			14 ga. 1/2" X 1"	4	H97	\$92.30	\$103.80	\$110.60	\$117.90	29	Truck
	90"	18"	14 ga. 1/2" X 1"	3	H98	\$97.70	\$110.42	\$116.70	\$124.50	31	Truck
96"	18"	14 ga. 1/2" X 1"	4	H99	\$114.60	\$128.30	\$136.20	\$145.10	33	Truck	

\*UPS Dimensional weight regulations apply. Additional shipping charges may occur.

**WE OFFER A 5% CAGE DISCOUNT FOR \$400 OR MORE OF ASSORTED CAGES!**

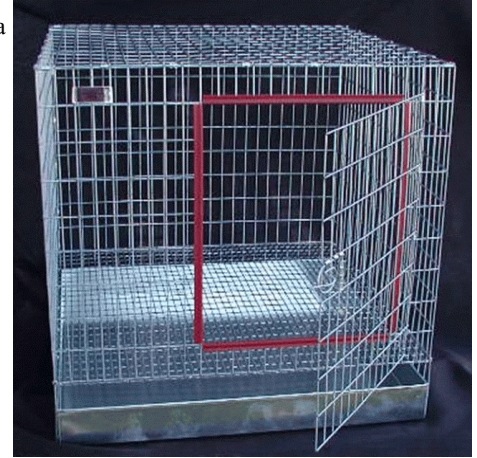


## E-Series Economy Hutches

Single-unit, Rectangular Cages With Sliding Clean-out Tray

### Cage Specifications and Ordering Instructions:

1. The E-series cages are manufactured by our own company and are designed to be a quality product at an economical price.
2. The **door, top, and sides** are constructed of 2 X 1", 14-gauge galvanized **before** wire. The floors are constructed of either 1 X ½", 14-gauge galvanized before welded wire or ½" X ½", 16-gauge galvanized after welded wire, depending upon the model. Other types of floors are available upon request.
3. Doors swing out. The front of the cage is designed with a superior door lock compared to those on our competitors' models, and the door opening is slightly offset, leaving room for a feeder. **Feeders Sold Separately (Pg. 24).**
4. Trays come standard as 2 ½" plastic Dura-Trays. The tray slides into the cage under the wire floor through an opening in the front of the cage. A wire panel is installed under the tray for support. This design eliminates the cost of support legs and tray slides found in our K-Series cages.
5. The E-Series cages are **not** designed to be stacking cages. Rather, we recommend the J-Series if you plan to stack your cages on top of each other.
6. Additional options are available upon request, including blue, solid-poly divider panels.
7. Each E-Series cage is available flat or totally assembled. Cages 24" X 30" and larger cannot be shipped totally assembled. As a result, all such sizes should be ordered flat if they are to be shipped. **Flat Cages Require Some Assembly**, although J-clips and hardware are included.
8. **To Order:** Please insert the Code Letter for the E-series cage you wish to buy after the Base Stock No. For example, HE8G would be a flat (unassembled) 24" X 36" X 18" cage with 4" high urine guards for preventing urination past the pan.



HE6S

**We offer a 5% discount on cages for any order including \$400.00 or more of any cages.**

Unassembled cages require the use of a **J-clip pliers**. We provide pliers on a rental basis for a deposit of \$13.90. If returned within 30 days with a copy of the original sales slip, \$10.90 of the deposit will be refunded. Ask for **Stock No. Z079**.

Dimensions			Compartment	Floor Wire	Base Stock No.	Price Each Unassembled		Price Each Assembled		Ship. Wt. (lbs)
D	L	H				CODE F	CODE G	CODE S	CODE T	
					No Urine Guards		With Urine Guards			
18	24	14	1	½" X ½" galv. aft.	HE1	\$43.70	\$50.30	\$48.60	\$56.60	12**
24	18	14	1	½" X ½" galv. aft.	HE2	\$43.90	\$51.10	\$48.80	\$57.40	12**
	24	14	1	½" X ½" galv. aft.	HE3	\$50.60	\$58.20	\$53.70	\$62.70	17**
	36	14	2	½" X ½" galv. aft.	HE4	\$74.60	\$83.60	\$79.60	\$90.70	23
30	36	14	3	½" X ½" galv. aft.	HE5	\$90.70	\$100.50	\$102.40	\$114.60	24*
24	24	18	1	1" X ½" galv. bef.	HE6	\$51.60	\$59.20	\$54.60	\$64.10	17**
	30	18	1	1" X ½" galv. bef.	HE7	\$58.10	\$65.90	\$60.90	\$70.70	19*
	36	18	1	1" X ½" galv. bef.	HE8	\$67.70	\$76.30	\$70.20	\$81.40	21*
	36	18	2	1" X ½" galv. bef.	HE9	\$76.60	\$85.70	\$81.70	\$92.70	23*
30	24	18	1	1" X ½" galv. bef.	HEA	\$57.90	\$65.20	\$60.90	\$70.10	19*
	30	18	1	1" X ½" galv. bef.	HEB	\$68.80	\$76.90	\$71.60	\$81.80	21*
	36	18	1	1" X ½" galv. bef.	HEC	\$76.10	\$85.20	\$79.40	\$90.90	24*
	36	18	2	1" X ½" galv. bef.	HED	\$85.30	\$94.70	\$90.50	\$101.90	25*

\*UPS Dimensional weight regulations apply. Additional shipping charges may occur.

\*\*For assembled cages **only**, UPS dimensional weight regulations apply. Additional shipping charges will occur.

**QUESTIONS ABOUT GALVANIZED AFTER VS. GALVANIZED BEFORE MESH?**

See Page 1