
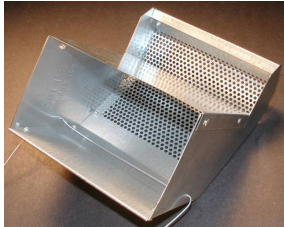
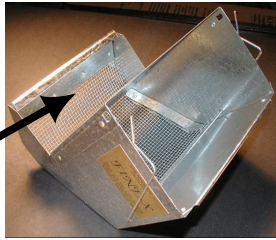
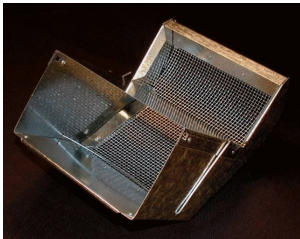
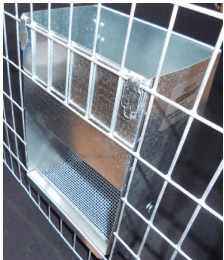


FEEDERS

All of our feeders have a hutch-card holder along the back panel of the feeder and are made with galvanized steel. **Feeder Covers Sold Separately (see Page 19).** In proper installation with rabbits, the bottom of the feeder should be 4" above the wire floor for commercial size breeds, and 2" for miniature breeds.

SAVE FEED!

Rabbits will waste less food with a metal feeder than with a crock or bowl.

Feeder Type	Width	Stock No.	Price Each			Ship. Wt. (lbs. / doz.)
			1 - 11	12 - 59	60 +	
Solid Back and Bottom Tray extends 2 1/8" into cage 	3 1/2"	FSB3	\$4.55	\$4.40	\$4.09	10
	5 1/2"	FSB5	\$4.60	\$4.40	\$4.09	12
	7 1/2"	FSB7	\$4.75	\$4.40	\$4.09	14
	9 1/2"	FSB9	\$5.00	\$4.65	\$4.09	18
	11 1/2"	FS11	\$5.10	\$4.65	\$4.09	19
Siftomatic® Perforated Back and Bottom Tray extends 2 1/8" into cage 	3 1/2"	F030	\$7.40	\$6.90	\$6.57	8
	5 1/2"	F050	\$7.90	\$7.30	\$6.94	11
	7 1/2"	F070	\$8.50	\$7.90	\$7.53	13
	9 1/2"	F090	\$8.90	\$8.40	\$7.96	16
	11 1/2"	F311	\$8.90	\$8.40	\$7.96	18
Fine-X® Wire Screen Back and Bottom (Fine wire screen removes dust from feed) Tray extends 2 1/8" into cage 	3 1/2"	FX30	\$5.55	\$5.55	\$5.23	9
	5 1/2"	FX50	\$5.65	\$5.60	\$5.23	10
	7 1/2"	FX70	\$5.75	\$5.60	\$5.23	12
	9 1/2"	FX90	\$6.10	\$5.70	\$5.23	14
	11 1/2"	FX11	\$6.15	\$5.75	\$5.23	16
Fine-X® Wide-Mouth Screen Bottom (Ideal for Lops & Dwarfs!) Tray extends 3" into cage 	3 1/2"	FW30	\$6.50	\$6.25	\$5.89	10
	5 1/2"	FW50	\$6.50	\$6.30	\$5.95	11
	7 1/2"	FW70	\$6.70	\$6.45	\$6.07	13
	9 1/2"	FW90	\$6.90	\$6.70	\$6.31	16
	11 1/2"	FW11	\$7.10	\$6.85	\$6.44	18
Pro-B® Screen-Bottom Feeders <ul style="list-style-type: none"> • Large 4" high opening allows easier access for larger • Flush mount design saves inside cage room • Larger 9"H X 5" dimensions provide extra food capacity 	5 1/2"	F775	\$7.10	\$6.60	\$6.30	14
	Covers for 5 1/2" F775	FC77	\$3.70	\$3.70	\$3.70	3 1/4

METAL FEEDER COVERS

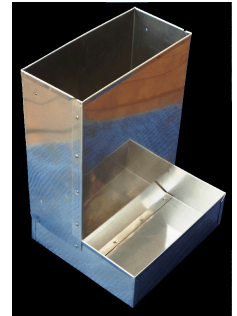
Feeder Size	Fine-X® & Solid Bottoms		For Feeders With Perforated Bottoms	
	Stock No.	Price Each	Stock No.	Price Each
3 1/2"	FC13**	\$1.90	FC91*	\$1.60
5 1/2"	FC15**	\$2.10	FC92*	\$1.70
7 1/2"	FC17**	\$2.20	FC93*	\$1.80
9 1/2"	FC19**	\$2.40	FC94*	\$1.95
11 1/2"	F111**	\$2.50	FC95*	\$2.10

*Shoe-box cover design; **Hinged cover design.

Stainless Steel Dog Feeder

8 1/4" W x 12 1/2" H

26 gauge stainless steel. Shipping wt. 32 lbs / doz. Attachment springs are included.



Stock No. F922\$42.50 ea.
.....12 or more @ \$39.80 ea.

E-Z® PLASTIC FEEDERS

Just slide the notched "wedge" over the molded stem on the inside of the cage to lock it firmly in place. These "J" style feeders have an extra wide, perforated 3" tray - ideal for dogs and breeds of rabbits with large heads.

Style	Size	Color	Stock No.	Price Each			Ship. wt / doz (lbs)
				1-11	12-35	36+	
Feeder	3 1/2" W	Light Blue	F21B	\$5.50	\$5.10	\$4.90	9
		Light Gray	F22G	\$5.50	\$5.10	\$4.90	9
	5 1/2" W	Light Blue	F33B	\$5.50	\$5.10	\$4.90	13
		Light Gray	F34G	\$5.50	\$5.10	\$4.90	13



F22G



F33B

"SUPER" FEEDER

- All metal (26 ga.) construction
- Great for carriers and cages
- Great for animals with large heads
- Easily fastens with 22-ga. tab

Size	Stock No.	Price Each			Shipping Wt. per Doz.
		1-11	12-59	60 +	
3" X 3" X 2 1/4"	F003	\$4.50	\$4.30	\$4.04	4 lbs.
3" X 5" X 2 1/4"	F004	\$4.95	\$4.70	\$4.47	6 lbs.



F004

CREEP FEEDERS FOR RABBITS

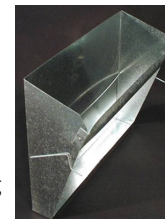
For feeding a special creep feed to the litter to step up production and weight gain. Feeder has 6 holes. Fastens inside cage and you feed into a sliding tray from the outside. The doe can't get into the holes and eat the specially prepared feed for her litter. Shipping wt. 2 lbs.



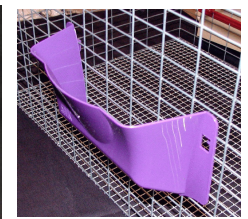
Stock No. FCF1.....\$12.40 ea.
.....12 or more @ \$11.70 ea.

HAY RACKS

Attach to outside of cage. Each rack easily is filled without having to open the cage.



F531



FH75

Model				Price Each		Ship. Wt. (lbs)
Constr.	W	H	Stock No.	1-11	12 +	
Galv. metal	11 1/2"	8 1/2"	F531	\$6.50	\$6.30	1 1/2
Galv. metal	7 1/2"	8 1/2"	F717	\$6.05	\$5.80	1 1/4
Plastic	9"	4 1/2"	FH75	\$3.20	\$2.65	1/4