

METAL FEEDER COVERS

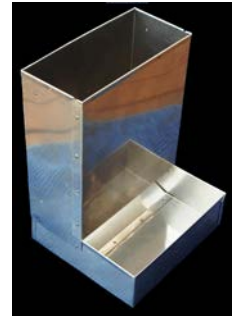
Feeder Size	Fine-X® & Solid Bottoms		For Feeders With Perforated Bottoms	
	Stock No.	Price Each	Stock No.	Price Each
3 1/2"	FC13**	\$1.90	FC91*	\$1.60
5 1/2"	FC15**	\$2.10	FC92*	\$1.70
7 1/2"	FC17**	\$2.20	FC93*	\$1.80
9 1/2"	FC19**	\$2.40	FC94*	\$1.95
11 1/2"	F111**	\$2.50	FC95*	\$2.10

*Shoe-box cover design; **Hinged cover design.

Stainless Steel Dog Feeder

8 1/4" W x 12 1/2" H

26 gauge stainless steel. Shipping wt. 32 lbs / doz. Attachment springs are included.



Stock No. F922\$35.80 ea.
12-35 @ \$30.20 ea.
36+ @ \$28.70 ea.

E-Z® PLASTIC FEEDERS

Just slide the notched "wedge" over the molded stem on the inside of the cage to lock it firmly in place. These "J" style feeders have an extra wide, perforated 3" tray - ideal for dogs and breeds of rabbits with large heads.

Style	Size	Color	Stock No.	Price Each			Ship. wt / doz (lbs)
				1-11	12-35	36+	
Feeder	3 1/2" W	Light Blue	F21B	\$6.40	\$6.10	\$5.80	9
		Light Gray	F22G	\$6.40	\$6.10	\$5.80	9
	5 1/2" W	Light Blue	F33B	\$6.70	\$6.35	\$6.05	13
		Light Gray	F34G	\$6.98	\$6.65	\$6.28	13



F22G

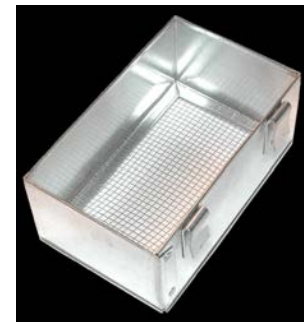


F33B

"SUPER" FEEDER

- All metal (26 ga.) construction
- Great for carriers and cages
- Great for animals with large heads
- Easily fastens with 22-ga. tab

Size	Stock No.	Price Each			Shipping Wt. per Doz.
		1-11	12-59	60 +	
3" X 3" X 2 1/4"	F003	\$4.50	\$4.30	\$4.04	4 lbs.
3" X 5" X 2 1/4"	F004	\$4.95	\$4.70	\$4.47	6 lbs.



F004

CREEP FEEDERS FOR RABBITS

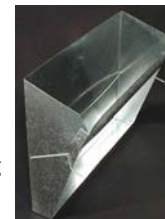
For feeding a special creep feed to the litter to step up production and weight gain. Feeder has 6 holes. Fastens inside cage and you feed into a sliding tray from the outside. The doe can't get into the holes and eat the specially prepared feed for her litter. Shipping wt. 2 lbs.



Stock No. FCF1.....\$12.40 ea.
12 or more @ \$11.70 ea.

HAY RACKS

Attach to outside of cage. Each rack easily is filled without having to open the cage.



F531



FH75

Constr.	Model			Price Each		Ship. Wt. (lbs)
	W	H	Stock No.	1-11	12 +	
Galv. metal	11 1/2"	8 1/2"	F531	\$6.50	\$6.30	1 1/2
Galv. metal	7 1/2"	8 1/2"	F717	\$6.05	\$5.80	1 1/4
Plastic	9"	4 1/2"	FH75	\$3.20	\$2.65	1/4