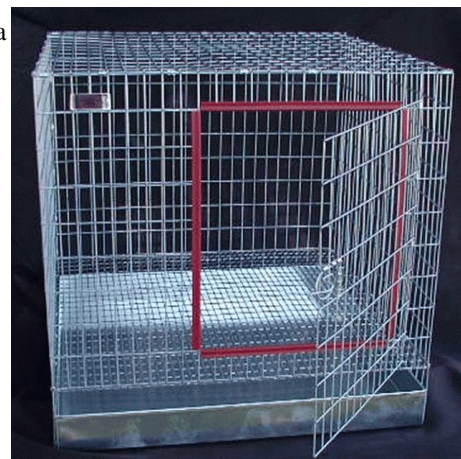


E-Series Economy Hutches

Single-unit, Rectangular Cages With Sliding Clean-out Tray

Cage Specifications and Ordering Instructions:

1. The E-series cages are manufactured by our own company and are designed to be a quality product at an economical price.
2. The **door, top, and sides** are constructed of 2 X 1", 14-gauge galvanized **before** wire. The floors are constructed of either 1 X 1/2", 14-gauge galvanized before welded wire or 1/2" X 1/2", 16-gauge galvanized after welded wire, depending upon the model. Other types of floors are available upon request.
3. Doors swing out. The front of the cage is designed with a superior door lock compared to those on our competitors' models, and the door opening is slightly offset, leaving room for a feeder. **Feeders Sold Separately (Pg. 24).**
4. Trays come standard as 2 1/2" plastic Dura-Trays. The tray slides into the cage under the wire floor through an opening in the front of the cage. A wire panel is installed under the tray for support. This design eliminates the cost of support legs and tray slides found in our K-Series cages.
5. The E-Series cages are **not** designed to be stacking cages. Rather, we recommend the J-Series if you plan to stack your cages on top of each other.
6. Additional options are available upon request, including blue, solid-poly divider panels.
7. Each E-Series cage is available flat or totally assembled. Cages 24" X 30" and larger cannot be shipped totally assembled. As a result, all such sizes should be ordered flat if they are to be shipped. **Flat Cages Require Some Assembly**, although J-clips and hardware are included.
8. **To Order:** Please insert the Code Letter for the E-series cage you wish to buy after the Base Stock No. For example, HE8G would be a flat (unassembled) 24" X 36" X 18" cage with 4" high urine guards for preventing urination past the pan.



HE6S

We offer a 5% discount on cages for any order including \$400.00 or more of any cages.

Unassembled cages require the use of a **J-clip pliers**. We provide pliers on a rental basis for a deposit of \$14.90. If returned within 30 days with a copy of the original sales slip, \$11.90 of the deposit will be refunded. Ask for **Stock No. Z079**.

Dimensions			Compartment	Floor Wire	Base Stock No.	Price Each Unassembled		Price Each Assembled		Ship. Wt. (lbs)
D	L	H				CODE F No Urine Guards	CODE G With Urine Guards	CODE S No Urine Guards	CODE T With Urine Guards	
18	24	14	1	1/2" X 1/2" galv. aft.	HE1	\$37.30	\$42.90	\$40.90	\$47.60	12**
24	18	14	1	1/2" X 1/2" galv. aft.	HE2	\$36.90	\$42.90	\$40.70	\$47.60	12**
	24	14	1	1/2" X 1/2" galv. aft.	HE3	\$43.10	\$48.90	\$45.90	\$52.70	17**
	36	14	2	1/2" X 1/2" galv. aft.	HE4	\$63.10	\$70.90	\$66.90	\$75.90	23
30	36	14	3	1/2" X 1/2" galv. aft.	HE5	\$76.50	\$85.80	\$85.50	\$96.20	24*
24	24	18	1	1" X 1/2" galv. bef.	HE6	\$44.70	\$50.50	\$47.60	\$54.70	17**
	30	18	1	1" X 1/2" galv. bef.	HE7	\$50.30	\$58.20	\$51.70	\$60.70	19*
	36	18	1	1" X 1/2" galv. bef.	HE8	\$58.20	\$67.40	\$60.20	\$70.90	21*
	36	18	2	1" X 1/2" galv. bef.	HE9	\$67.10	\$74.90	\$70.90	\$79.90	23*
30	24	18	1	1" X 1/2" galv. bef.	HEA	\$50.30	\$56.10	\$51.70	\$58.70	19*
	30	18	1	1" X 1/2" galv. bef.	HEB	\$59.60	\$67.40	\$61.70	\$70.70	21*
	36	18	1	1" X 1/2" galv. bef.	HEC	\$65.90	\$75.20	\$68.40	\$79.10	24*
	36	18	2	1" X 1/2" galv. bef.	HED	\$75.70	\$83.50	\$79.70	\$88.60	25*

*UPS Dimensional weight regulations apply. Additional shipping charges may occur.

For assembled cages **only, UPS dimensional weight regulations apply. Additional shipping charges will occur.

QUESTIONS ABOUT GALVANIZED AFTER VS. GALVANIZED BEFORE MESH?
See Page 1